

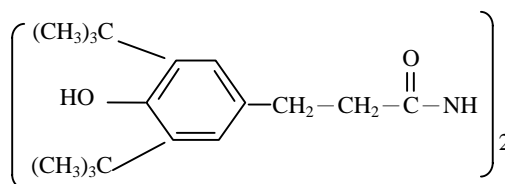
# EVERNOX<sup>®</sup> MD-1024

## Phenolic Antioxidant, metal deactivator

**Chemical Name** 2',3-bis[3-(3,5-di-tert-butyl-4-hydroxyphenyl)propionyl] propionohydrazide

**Formula** C<sub>34</sub>H<sub>52</sub>N<sub>2</sub>O<sub>4</sub>

**Structure**



**Molecular Weight** 552.8

**CAS Number** 32687-78-8

<b>Specification</b>	<u>Criterion</u>	<u>Requirement</u>
	Appearance	White, to off-white powder
	Ash content	0.1% max
	Heat loss	0.5% max
	Transmittance (2g in 100 ml Methanol)	at 425 nm 96.0% min at 500 nm 98.0% min
	Assay (By HPLC)	99.0% min

### Physical Properties

Melting range (°C)	221.0°C -232.0°C
Flash point (°C)	> 356°F
Solubility (20°C)	g/100g
THF	12.0
Acetone	4
Chloroform	0.4
Methanol	4
Ethyl acetate	0.5
Methylene Chloride	0.25
Toluene	<0.01
Water	<0.01

Weight loss (TGA, in air at 20°C/min)

Temp.(°C) at 2 % weight loss	253°C
Temp.(°C) at 10 % weight loss	290°C

<b>Applications</b>	Highly efficient hindered phenolic antioxidant and metal deactivator for polyolefins and certain thermo-plastic elastomers utilized as primary insulation in contact with copper.
<b>Handling &amp; Safety</b>	EVERNOX MD-1024 should be handled with care and prevent contamination of the environment. Avoid dust formation and ignition sources. For more detailed information please refer to the material safety data sheet.
<b>Packing</b>	The following packages are available upon customer's request : (1) 40 kgs fiber drum. (2) Other specific request.
<b>Transportation</b>	EVERNOX MD-1024 is not dangerous materials according to the transportation regulations.
<b>Storage</b>	EVERNOX MD-1024 be stored under suitable conditions (dry & cool). Maximum recommended storage time from the date of analysis : 24 months.



妙春實業股份有限公司

**EVERSPRING CHEMICAL CO., LTD.**

台中市工業區 24 路 4 號

4, 24Rd., Industrial Park, Taichung, Taiwan

Tel : +886-4-23592448 Fax : +886-4-23593163

E-mail : [everspring@seed.net.tw](mailto:everspring@seed.net.tw)

Web site : [www.everspringchem.com.tw](http://www.everspringchem.com.tw)