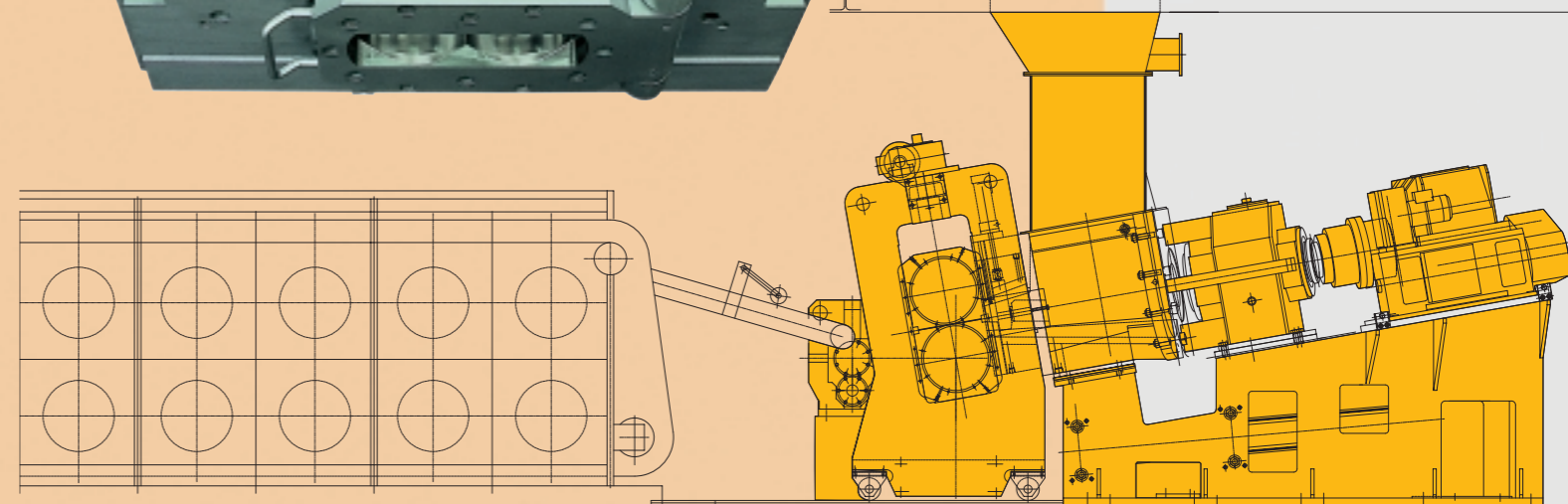
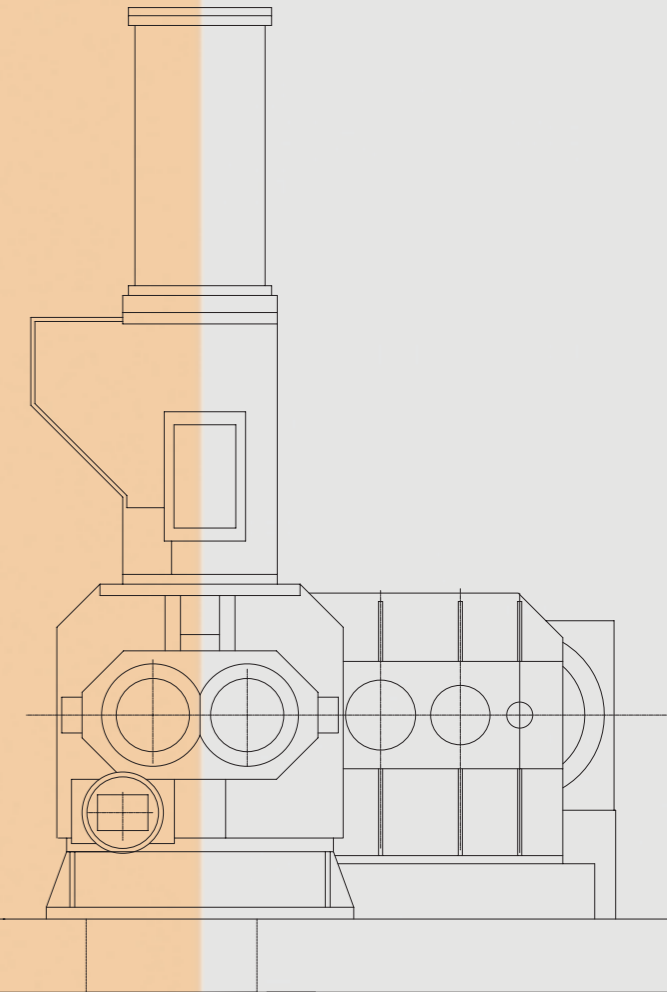
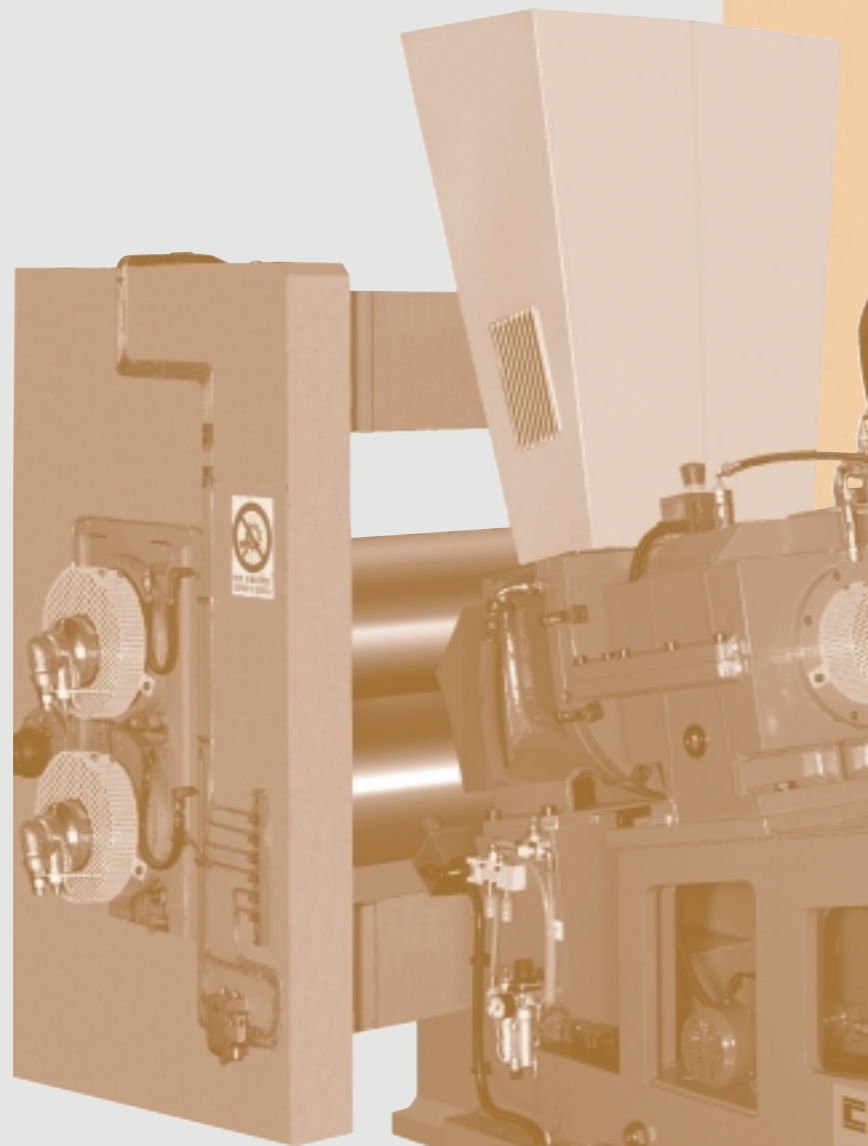


GRAPHICIND 02/04



CTE						
SIZE	65	95	145	185	225	310
Output (Kg/h)	200	550	2000	3500	5500	9000
Batch (dm ³)	3	20	60	100	140	200
Mixer size (dm ³)	—	—	80	120	180	270
ROLLER UNIT						
Roll dia x width (mm)	—	—	300x650	360x800	420x1000	510x1100
Slab width (mm)	—	—	500	600	800	900



Zona Ind. Sud-Ovest - via Massari Marzoli, 6 - 21052 BUSTO ARSIZIO (VA)
 Tel. +39 0331 342551 - Fax +39 0331 342559
 e-mail: colmec@colmec.it - www.colmec.it

CTE SYSTEM

FEEDING BY

- Hot rubber from:
 - Internal mixer
 - Roll mill
- Cold rubber with low viscosity

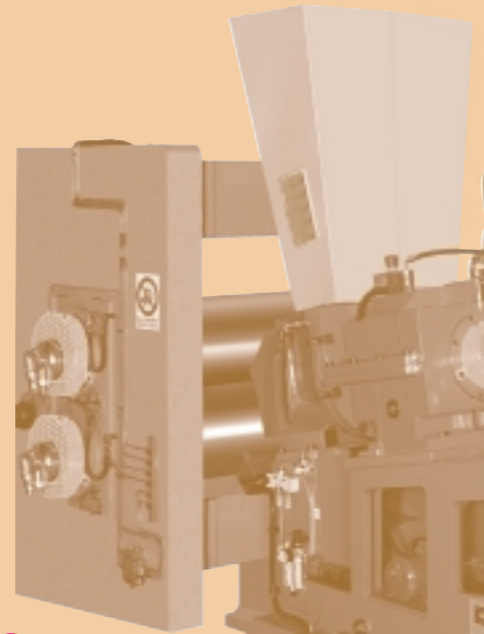
APPLICATIONS:

SLABS/PELLETS/STRAINER/PROFILES

- 1 - Roller Head
- 2 - Strainer (with gear pump)
- 3 - Pelletizer head
- 4 - Head for profiles

ADVANTAGES:

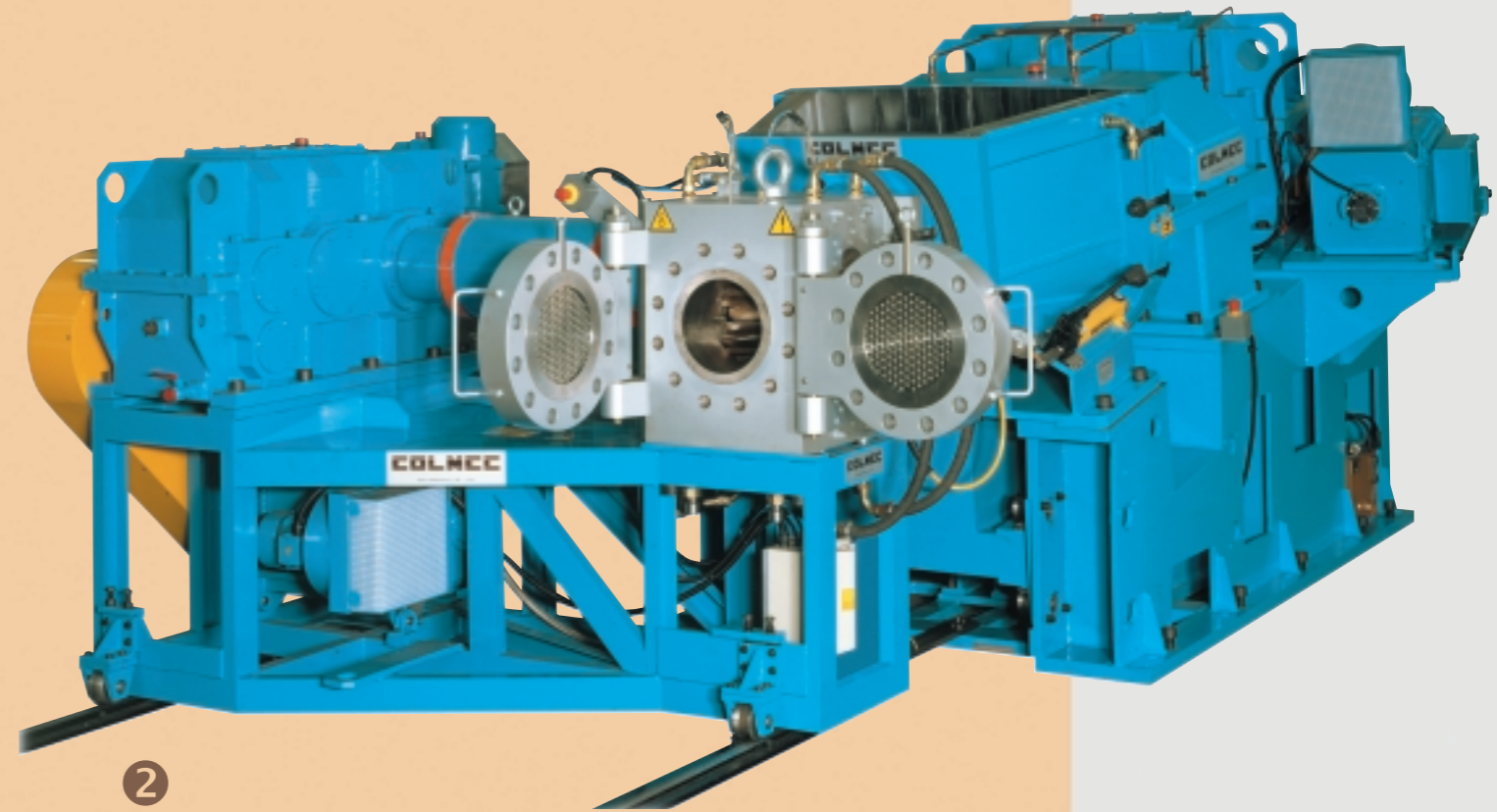
- Continuous process
- Low power consumption
- Low maintenance costs
- Quick cleaning
- High Cooling efficiency



1

CTE 185 WITH ROLLER HEAD

CTE SYSTEM

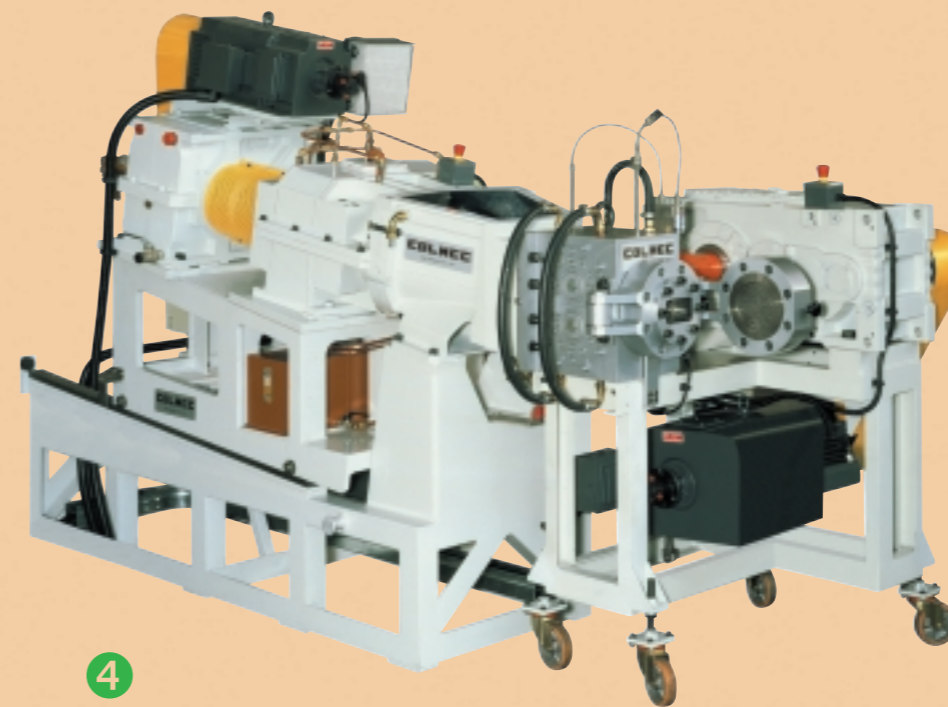


2

CTE 225 WITH GEAR PUMP FOR COMPOUND STRAINING



CTE 310 IN CONTINUOUS PRODUCTION AT 6.500 kg/h



4

CTE 95 WITH GEAR PUMP FOR EXTRUSION OF PROFILES



3

PELLETIZER HEAD